

# Alaric Stackable Aluminum Banquet Chair

SKU: BQT-5062-AL

Experience Excellence with Superior Seating,  
Your Hospitality Partner of Choice.

Discover the Alaric Banquet Chair, a harmonious blend of durability and sophistication.

Crafted with a robust aluminum frame, this chair guarantees long-lasting performance, ensuring it remains a staple for all your events. Its ergonomic design and **flex-back** offer unmatched comfort, elevating your guests' satisfaction levels. Effortless stacking and glides further enhance its convenience, making setup and storage a breeze.



## PRODUCT SPECIFICATIONS

### Alaric Banquet Chair Specifications

Overall Height	34 in
Overall Width	18.5 in
Overall Depth	24 in
Seat Height	18 in
Seat Width	15.5 in
Seat Depth	16.5 in
Seat Foam Thickness	2.5 in
Weight	20 lb
Weight Capacity	400 pounds
Frame Material	Aluminum
COM Seat Total	0.4 yards
COM Back Total	0.5 yards

## PRODUCT FEATURES

- 1 Stacks 10 High
- 2 Nickel Plated Swivel Glides
- 3 10 Year Warranty
- 4 Cal 117 Fire Safety Rating
- 5 Fully Welded 12 Gauge Aluminum Frame

# Alaric Customization

CRAFTED FOR UNIQUE BRANDS

## Upholstery Options

Visit our [Upholstery Collection](#) page to search through thousands of upholstery options.

Our company offers the option of COM (Customer's Own Material) in our chair production, enabling clients to select their own materials to create chairs that perfectly align with their unique preferences

## Chair Frame Finishes



Solid Black



Texture Black



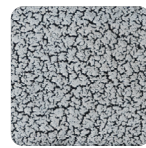
Gunmetal



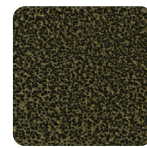
Metallic Silver



White



Silver Vein



Gold Vein



Copper Vein



Metallic Brown



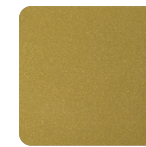
Copper Sparkle



Walnut



Bronze Sparkle



Metallic Gold



Cream

## Add-Ons



### Ganging mechanism

Upgrade your chairs with our practical ganging mechanism. Seamlessly link one chair to another, providing stability and alignment for events and gatherings.



### Webbed seating

Elevate your banquet chairs with the addition of webbed seating, designed for enhanced comfort.